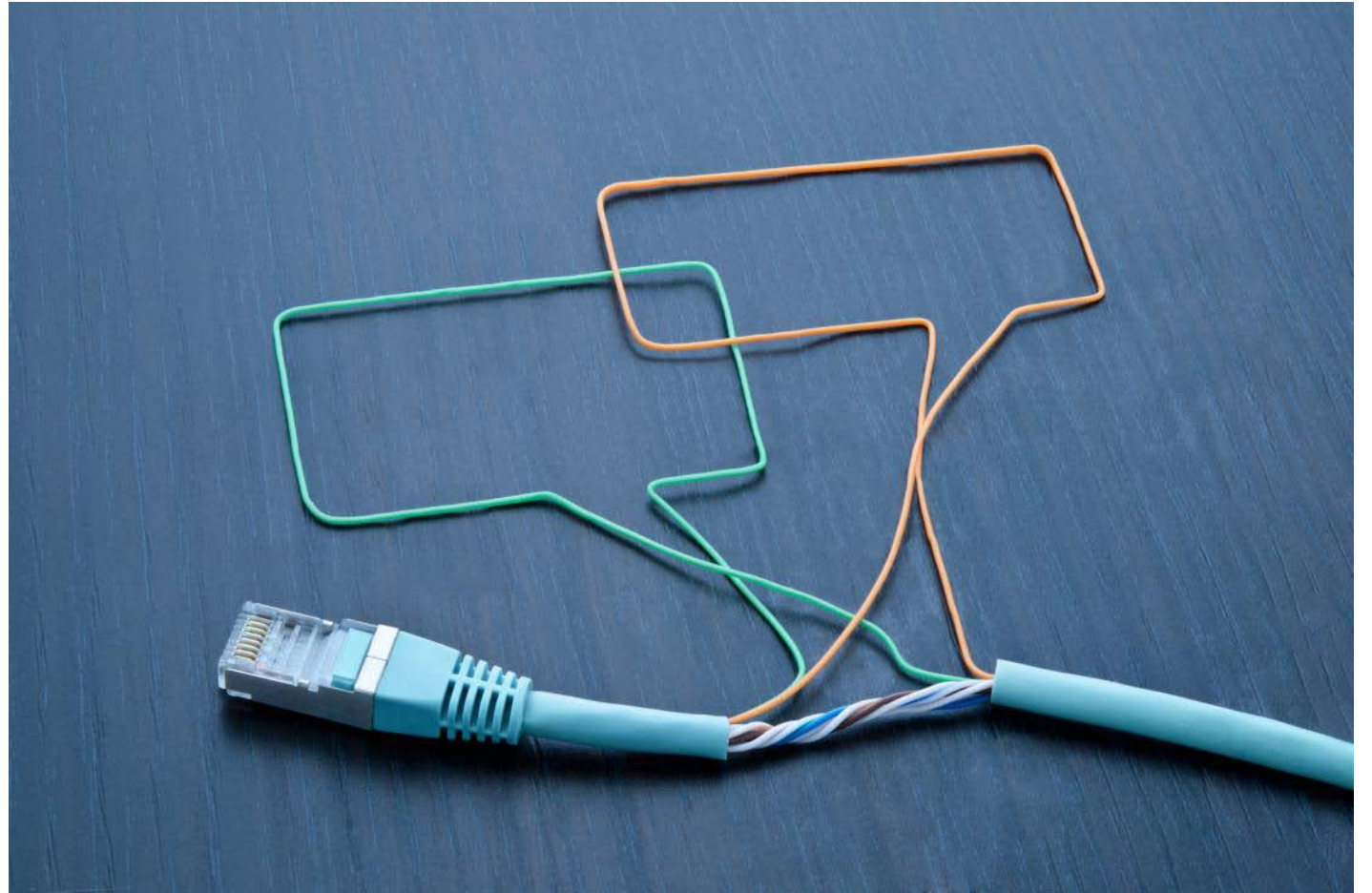




Semantic Analysis  
Customer Insights



# Achieving Higher Value Together

## Our Approach

Establish a close working relationship with stakeholders and end users.

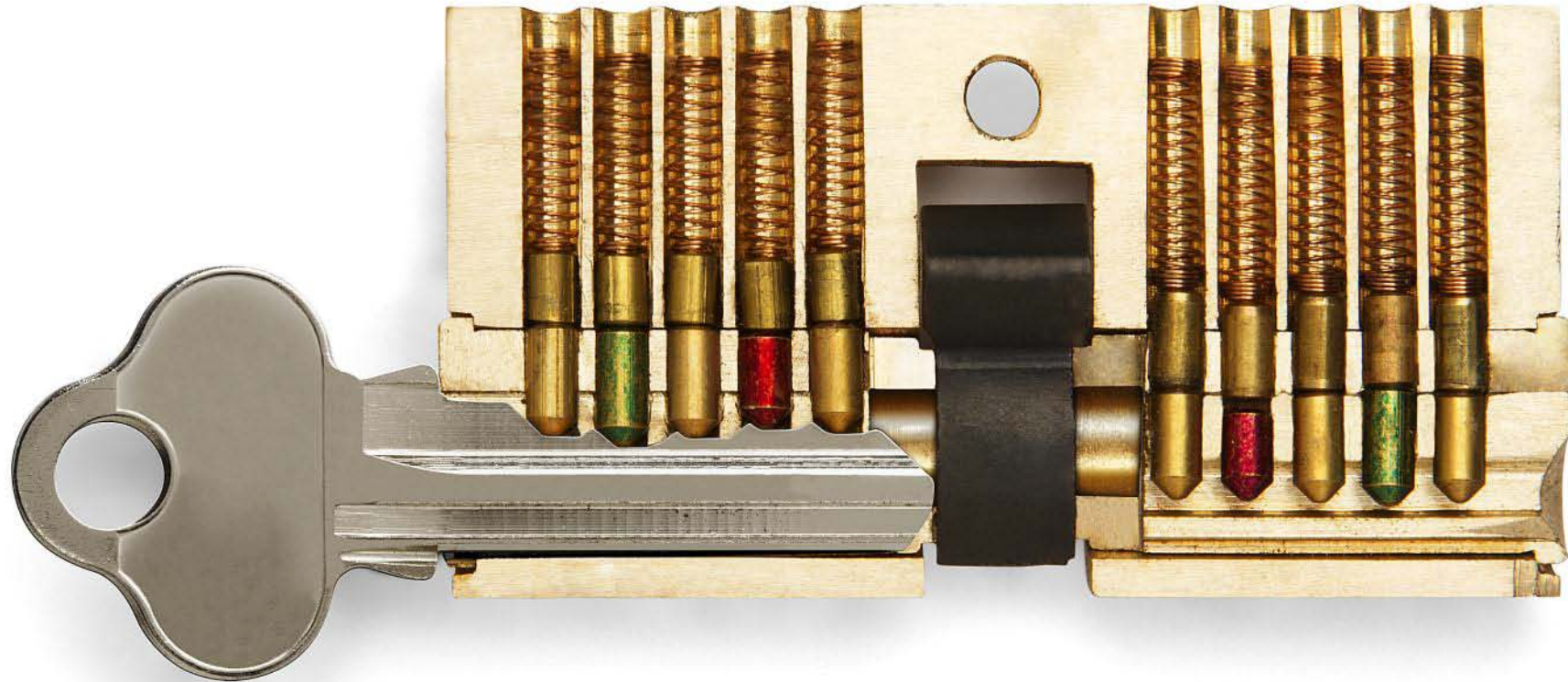
Involve users in development and through the life cycle of an application.

Identify impacts of your programs to better meet your objectives and the needs of the user.





How does text mining work?



# Driving forces of transformation and integration

## Requirement

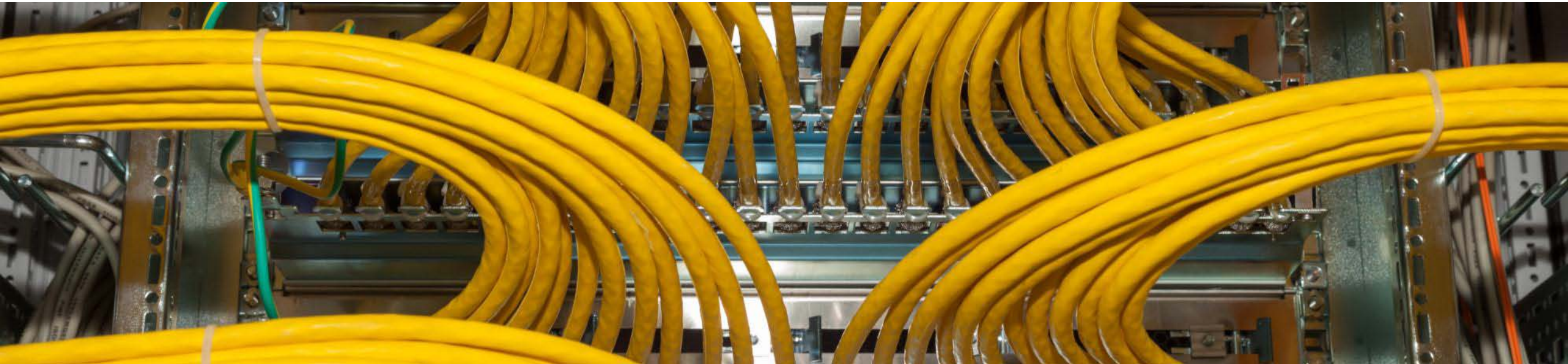
Semantic Analysis of Textual Information present in the 'Description' Field from the "Incident Logs".

## Analysis

Contents from the collected data is consolidated to database

Determine which description fields will be used

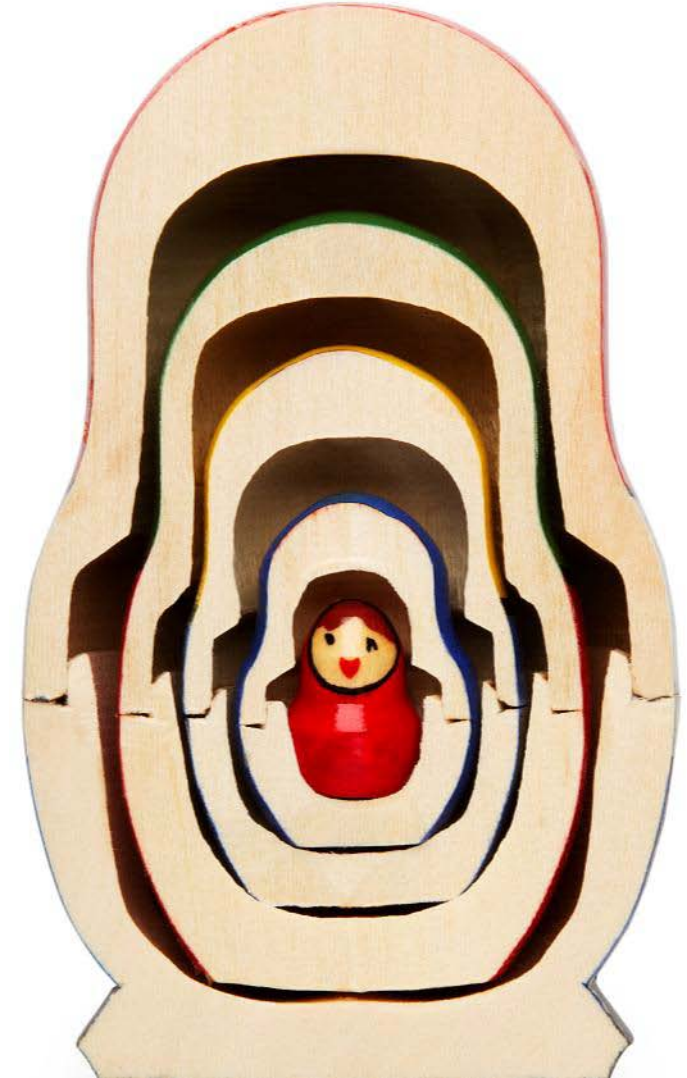
Perform analysis using semantic application



# Expectations of results



- ✓ Critical business intelligence answers complex questions
- ✓ Enhanced, positive user experience
- ✓ Reduction in the incident logs can decrease staff/shift employees to needed areas in the call center, potentially saving on overhead



Q&A

# Deloitte.



Official Professional Services Sponsor

Professional Services means audit, tax, consulting and financial advisory services.

#### About Deloitte

As used in this document, "Deloitte" means Deloitte LLP and its subsidiaries. Please see [www.deloitte.com/us/about](http://www.deloitte.com/us/about) for a detailed description of the legal structure of Deloitte LLP and its subsidiaries. Certain services may not be available to attest clients under the rules and regulations of public accounting.